

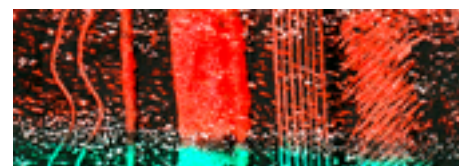


4 Etching Technique / Sgraffito

What you should know

The sgraffito technique consists of layering two or more colours thickly over each other and then etching away the top layer with the STOCKMAR scraper to expose the lower layer. With the scraper (Dia. 1) you can etch lines, expose specific areas or create interesting hatching and cross-hatching with the jagged or serrated edge (Dia. 2). You usually begin with a light colour and layer a darker one over it; the darker the upper layer, the more intensively the colours of the etched area will show up.

The STOCKMAR Scraper



In every STOCKMAR package – whether wax crayons or colouring blocks – you'll find a handy scraper with a practically shaped grip (A). This scraper offers a wide range of creative possibilities. With the wide smooth edge (B) you can scratch off coloured wax from a specific area by pushing; the narrow smooth edge (C) can be used to make tracks. If you want to work with lines, use the tip (F) of the scraper. With the serrated edge (D) you can create interesting hatching.

Techniques & Tips

An Adventure with Wax Colours



Etching Technique / Flower

You need:

- STOCKMAR Wax Colouring Blocks in green, light green, golden, orange and crimson
- smooth drawing paper DIN A5
- newspaper
- cloth or rag
- an old brush

1- Cover your working area with ample newspaper, since scraping will produce wax shavings that should occasionally be collected e.g. in a plastic bag by using a cloth or an old brush.

2- Cover the drawing paper with a thick coat of the colours green, light green, golden, orange and crimson. The colours should be applied in such a way so that



3



4

the green colour tones lie in the area of the leaves and stems and the red and orange-coloured tones in the area of the buds and flowers (Dia. 3).

3- Then cover the whole page with a thick layer of black. When doing this, apply the colour a number of times from left to right, from top to bottom and diagonally (Dia. 4).

4- Rub the black wax layer with a cloth so that the surface takes on a nice shine. Then etch out the form of a flower with the smooth narrow edge of the scraper (C, F). Begin with the stem, then add the leaves. After that, etch out the flowers and buds. Finally, accentuate your picture by adding decorative garlands to the flowers and stems (Dia. 5)



5

Techniques & Tips

An Adventure with Wax Colours



Bird of Paradise / Sgraffito

You need:

- STOCKMAR Wax Colouring Blocks or Crayons in several colours, e.g. a tin case or a wooden box with 16 colours.
- smooth drawing paper DIN A4
- soft pencil (B2)
- newspaper
- cloth or rag
- an old brush



1



2

1- Cover your working area with ample newspaper, since scraping will produce wax shavings that should occasionally be collected e.g. in a plastic bag by using a cloth or an old brush.

2- Using the oblong format, roughly sketch the outlines of an imaginative bird of paradise with a soft pencil (Dia. 1). Before colouring, erase your sketch so that only the weak contour lines remain visible. Then draw and colour the bird using bright, expressive tones (Dia. 2).

3- Now cover the whole sheet of drawing paper first with a heavy layer of blue, then of violet. When doing this, apply the colour a number of times from left to right, from top to bottom and diagonally (Dia. 3). If desired, you can create a shiny surface by rubbing it with a soft cloth before beginning to etch out the figure of the bird.



3

TIP

TIP: The heavier the layers of wax colour, the more intensive the colour contrast and brilliance of your picture will be.

Techniques & Tips

An Adventure with Wax Colours



Our website illustrations here cannot always provide completely precise reproductions. So we recommend that you simply give it a try yourself – and discover how much fun it can be!

4- Now begin the etching process. Since your drawing shimmers through the covering layers, it's easy to etch out the figure of the bird by using the scraper. First etch out the head, the beak, the body and the legs using the smooth edge of the scraper. Then use the serrated edge of the scraper to etch out the wings, tail feathers and the head feathers so that a feathery structure results. In doing so, first draw the quill of the feathers with



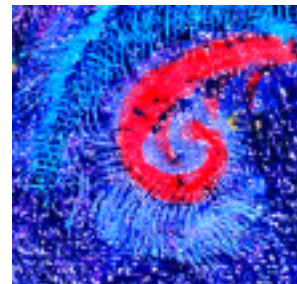
4

If you have to colour a large area and only have wax crayons to work with, simply remove the paper sleeve by dipping briefly in warm water. Then the long side of the crayon can be used for layering.

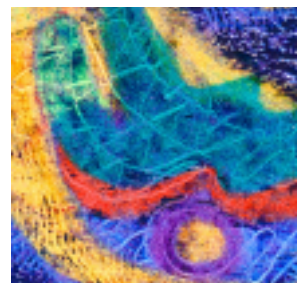
the tip of the scraper, then hatch the feathers with the serrated edge (Dia. 4).

5- If you scratch off the covering layers of wax colour beyond the contour lines you originally sketched, you'll discover a beautiful shade of blue. It's the blue tone with which you first layered over the bird of paradise. By doing this you can give the feathers an attractive, rich appearance (Dia. 5).

6- In the areas that have been scratched off, you can also etch out other additional ornamentation with the tip of the scraper (Dia. 6). As a result of layering over, etching and hatching, the bird of paradise takes on an unexpected and entirely different expressive quality (Dia. 7).



5



6



STOCKMAR