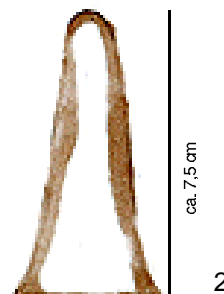




## Flower Fairy with Flowers

The flower fairy is decorated with blossoms and leaves. The more finely you model the details, the more delicate the fairy will be.



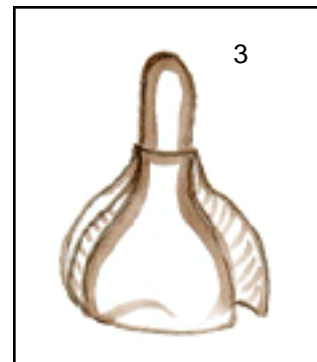
### What you need

- Strips of STOCKMAR Modelling Beeswax or Modelling Wax (40 x 100 mm) in the colours white, pink, light green, yellow and left over pieces of Modelling Wax for the small flowers
- Floral wire
- A pincers

1- First model the main body, to which all the other body parts and pieces of clothing will be attached. For this, shorten the white strip of Modelling Wax about 3 cm, warm the long piece in your hands and form into a roll (Dia. 1). Smoothen seams with the knife and then your warm finger.



2- Shape one end of the roll into a cone by kneading and pulling, tap the other end firmly on a smooth surface so that a wide standing base is created (Dia. 2).



3- For the skirt, make four leaf-shaped skirt sections and attach at the waist; arch the skirt outwards (Dia. 3).



4- Form three leaves from light green Modelling Wax and cut out jagged edges with the knife (Dia. 4). Press on and attach to the waist and then spread out the bottom of the skirt. Accentuate the waist

## techniques & tips modelling, forming and doing handcraft with Modelling Wax

STOCKMAR Modelling Beeswax / STOCKMAR Modelling Wax



5



6

with a light green belt: simply make a roll, flatten with your finger and place around waist.

5- The arms are two elongated white petals (about 4 cm long) which are curled inwards (Dia. 5). Attach with Sticking Wax at shoulder level. Attach several small light green and dark green leaves around the neck, curling them alternately inwards and outwards.

6- Shape a 1,2 cm head from the pink Modelling Wax. For the hair coil a thin yellow roll of Modelling Wax around the head. This can also be done in several steps. Place a small ball of wax on the top of the body for the neck; connect head and body with a piece of wire. Finally, model five narrow petals from the pink Modelling Wax and attach to the back of the head (Dia. 6).



Small Flowers

1- Model a standing base out of green Modelling Wax. For the stem, cover a piece of floral wire with wax: shape a narrow strip, cut to the necessary width with the knife, place around the wire, rolling it on a flat surface if desired. Then insert into the standing base.

2- Make a small ball for the blossom and attach to the tip of the stem. Attach flower petals around this center (Dia. 7).

