



Sleeping Beauty

You need

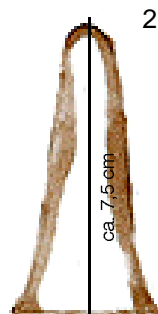
- Strips of STOCKMAR Modelling Beeswax or Modelling Wax (40 x 100 mm) in the colours red, pink, yellow, white and leftover pieces of blue and green
- Wooden matches or floral wire
- A pincers



1- The main body is modelled first and all other body parts and pieces of clothing are attached to it. For this, cut off about 3 cm from the strip of white Modelling Wax with the knife, warm the long piece in your hands and form into a roll (Dia. 1). Smooth over the seams with a knife and your warm finger.



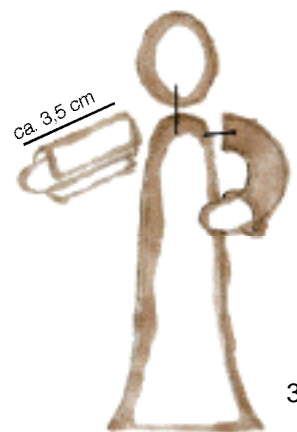
2- Model the one end of the roll into a cone by kneading and pulling and tap the other end firmly on a smooth surface to make a wide standing base (Dia. 2).

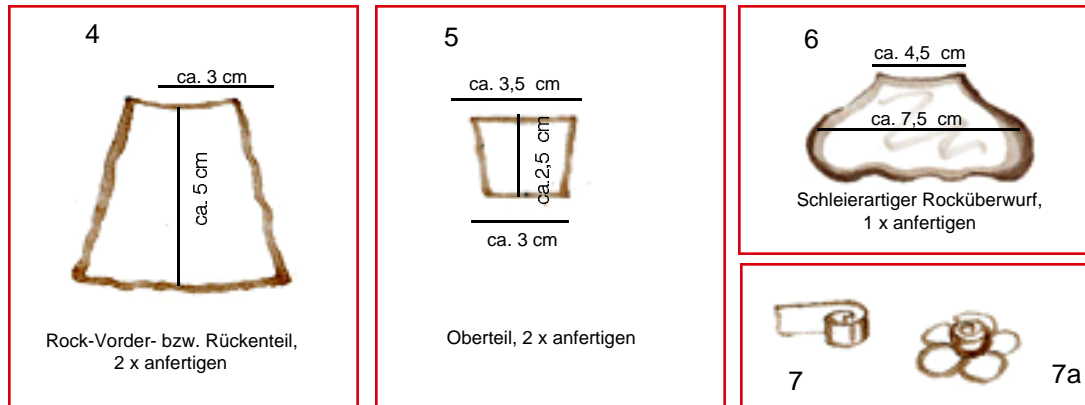


3- From a piece of pink Modelling Wax, form an oval about 2 cm in diameter and connect it to the body with the help of a piece of wooden match or wire.

4- From the narrow end of the strip of pink Modelling Wax, cut off two strips of about a half centimeter, warm them in your hands and form into rolls. These are the arms, which should be about 3.5 cm long.

5- Cover the arms with dress sleeves: To do this, shape a piece of red Modelling Wax by kneading and pulling into an extremely thin rectangle; from this, cut out two 2.5 x 3 cm pieces, place around the arms and smooth over the seams. Add connecting





pieces to the arms and attach to the body at shoulder level; bend arms forwards (Dia. 3).

6- Proceed in a similar fashion for the other pieces of clothing. For the skirt, very finely model a front and back section, form into the desired shape, using a knife if necessary (Dia. 4). Attach the parts to the waist by pressing firmly, overlap the seams and smoothen. Spread out the skirt widely.

7- Next form the front and back parts of the upper body from violet Modelling Wax (Dia. 5), press onto and attach to the body, smoothing over the seams. Model the veil-like skirt cover from white Modelling Wax.

TIP
Very finely kneaded STOCKMAR Modelling Wax can be formed into any shape. If you work for a long period of time on a given figure, it can happen that individual parts begin to lose their desired shape while you are working. In this case, warm the har-

Be sure this is extremely thin, which will make it possible to drape it practically like cloth (Dia. 6).

8- The blond hair is also modelled very thinly from the yellow Modelling Wax. Attach it to the head and drape it like a veil over the shoulders and back (see also "Hairstyles", directions 1, Dia. 13).

9- For the band of roses in the hair, the neckline, the cuffs and the belt, knead blue Modelling Wax into a rectangle and cut into narrow strips. The hair ornament is also decorated with tiny dots. Proceed in the same way for the belt and buttons.

10- The roses that are attached to the hem of the dress consist of rose blossoms and two leaves. For the blossoms, roll up narrow strips of wax; it looks particularly good if rose petals are added (Dia. 7 and 7a).

