

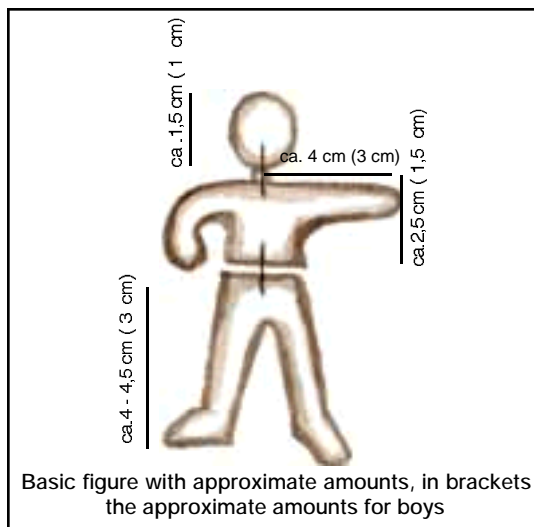


## Dollhouse Figures

The following directions describe how you can create a prototype dollhouse figure – which you can use as the basis for making a mother, grandmother or girl and a father or boy. Always work in the order described. All individual parts of a figures are connected with floral wire and additionally reinforced with Sticking Wax. This assures that they will retain enough stability after hardening so that they can be played with. The amounts given are only suggestions and can be varied.

### You need

- STOCKMAR Modelling Beeswax or Modelling Wax strips (40 x 100 cm) in the colours you desire for the figures, plus pink for the faces
- A kitchen knife



If you want your figure to be seated, bend it into a sitting position (Dia. 3).

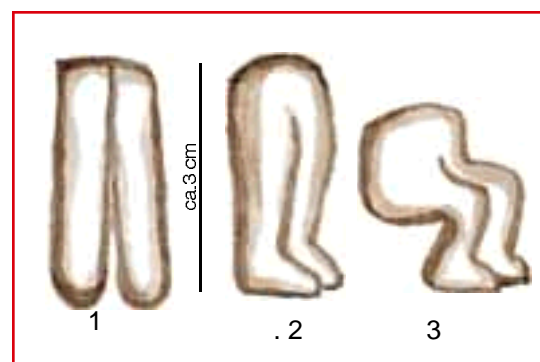
### 2- Upper body

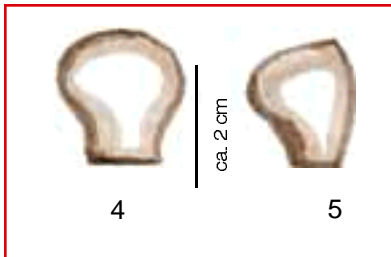
For the upper body, select the color you desire for the piece of clothing. Model the upper body so that the shoulder and waist areas are pronounced (Dia. 4). For the mother and

## Human Figure

### 1- Abdomen, legs or pants

Make two rolls and press firmly together in the stomach area. Smooth over seams (Dia. 1). For the feet or shoes, bend up lower ends, model as desired and then press down onto a flat surface so they are able to stand well (Dia. 2).

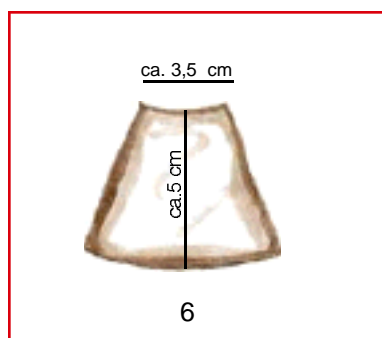




grandmother, model the breast area (Dia. 5). Connect the upper and lower bodies with pieces of wire and Sticking Wax.

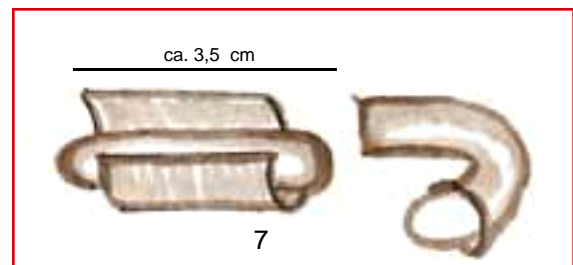
### 3- Skirt

You need a front and back section to make a skirt. For this, knead the Modelling Wax very thin and carefully model and pull into the desired shape (Dia. 6); it may be helpful to use a knife. Attach at the waist, overlap the seams and smooth over; spread out the bottom of the skirt.



### 4- Arms and Sleeves

Make two equally long rolls and before attaching these to the shoulder area of the upper body, cover them with slee-



ves. For the sleeves, knead out a piece of Modelling Wax till it's extremely thin and form into a rectangle of about 3 x 2 cm. Place this rectangle around the arm and smooth seams. Then bend arms into the desired form (Dia. 7). In the case of smaller figures (girls and boys) the arms are modelled directly out of the upper body. Attach arms to the shoulders with a piece of wire and Sticking Wax. It is easier to form the arms and hands out of the coloured wax used for the clothing (like children in the coloured illustrations on this page).

### 5- Head and Hairstyle

Make an oval for the head. For the hairstyle, form a thin circle, place on the head and press on from all sides. Any irregularities or bumps that result are desirable (Dia. 8). For the girl, lightly engrave a part with the knife and form braids directly out of the wax head



covering (see directions for "Modelling Basic Forms"/Dia. 12). Also lightly engrave a part for the grandmother and attach a bun to the back of the head (see directions for "Modelling Basic Forms"/Dia. 11). When the hair-style is finished, add a small ball of wax for the neck and connect head and body with the help of a piece of wire (Dia. 9).



### 6- Baby

For the baby, model a white cushion. The head is a pink ball to which a yellow bonnet is added. Connect head



and body with a piece of wire. Make the ribbons for the cushion from two very narrow rolls (Dia. 10).

### 7- Details

For the mother's shawl, knead out a thin piece of Modelling Wax and cut into a triangle with the knife. Drape over the mother's shoulders.

The neck scarf for the father is made the same way.

For the apron of the grandmother, form a thinly kneaded piece of Modelling Wax into the shape of an apron and attach to the waist.

For the basket, see the directions under "Modelling Basic Forms"/Dia. 4).