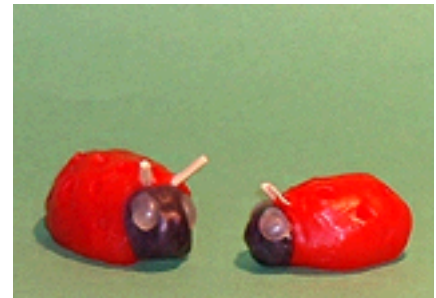




TECHNIQUES

Ladybugs on the march



You need

- Strips of STOCKMAR Modelling Beeswax or Modelling Wax (40 x 100 mm) in the colours red, white, green and black
- A kitchen knife
- Sticking Wax
- Wooden matches

1- Form an oval out of red Modelling Wax and cut one side flat with the knife. Model the body (Dia. 1).

2- Cut off a piece at the head-end and replace with a piece of black Modelling

Wax. Connect the individual parts with Sticking Wax (Dia. 2).

3- Form two white balls for the eyes, flatten with your finger and attach to both sides of the head.

4- Cut notches in the wings with the back of the knife and imprint dots with a match (Dia. 3). The antennae are made with pieces of wooden matches which have been shortened and split.

The very small ladybugs don't need eyes or antennae.



Abb. 1



Abb. 2



Abb. 3

